

# MONTHLY MEMBERSHIP PROGRESS REPORT

DISTRICT 3241 D

Results as of: 5/31/2026

GMT:

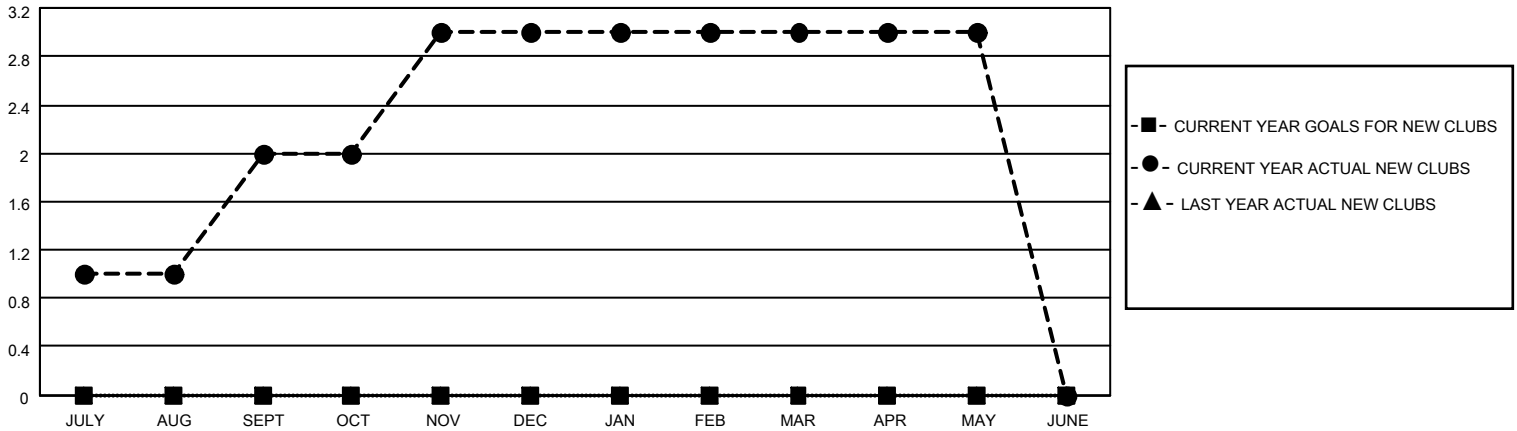
LOCATION INDIA

GMT CA

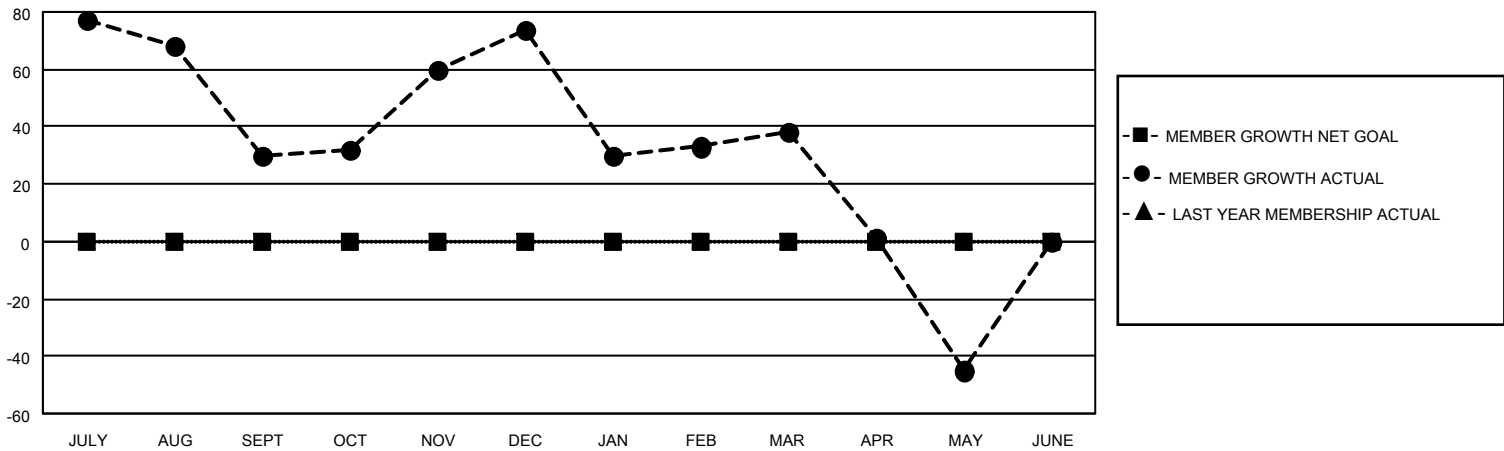
Clubs			
RESULTS FOR 2025-2026			
QUARTER	NEW CLUB GOAL	NEW CLUBS	DROPPED CLUBS
JULY/AUG/SEPT	0	2	4
OCT/NOV/DEC	0	1	0
JAN/FEB/MAR	0	0	4
APR/MAY/JUNE	0	0	1

Members			
RESULTS FOR 2025-2026			
QUARTER	MEMBER GROWTH NET GOAL	MEMBER GROWTH ACTUAL	DROPPED MEMBERS ACTUAL (including transfers)
JULY/AUG/SEPT	0	146	89
OCT/NOV/DEC	0	91	23
JAN/FEB/MAR	0	52	62
APR/MAY/JUNE	0	41	97

GOALS AND ACTUAL NEW CLUBS CUMULATIVE



GOALS AND ACTUAL MEMBERS CUMULATIVE



DROPPED CLUBS: 9	45 CLUBS OF 71 ADDED 1 OR MORE NEW MEMBERS	<b>GENDER DISTRIBUTION</b> MALE 1,134 (75.95%) FEMALE 358 (23.98%)
<b>DROPPED MEMBERS</b> DECEASED 3 CLUB CANCELLED 123 OTHER 143 TOTAL 269	<a href="#">CLICK HERE FOR CUMULATIVE MEMBERSHIP DATA</a>	TOTAL FAMILY UNIT MEMBERS 595 FAMILY MEMBERS PAYING HALF DUES 394